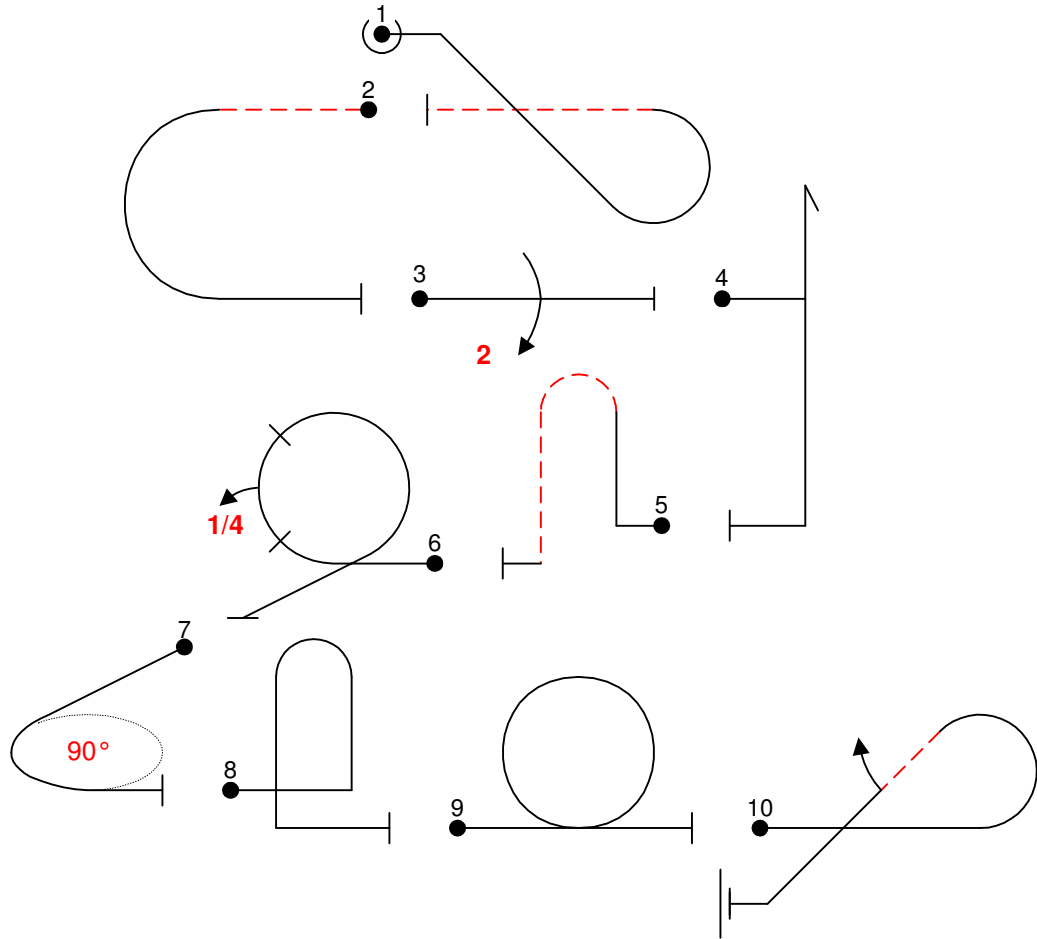
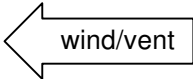




Salzmann-Cup 2006

FORM B

Bekannte Pflicht Einsteiger



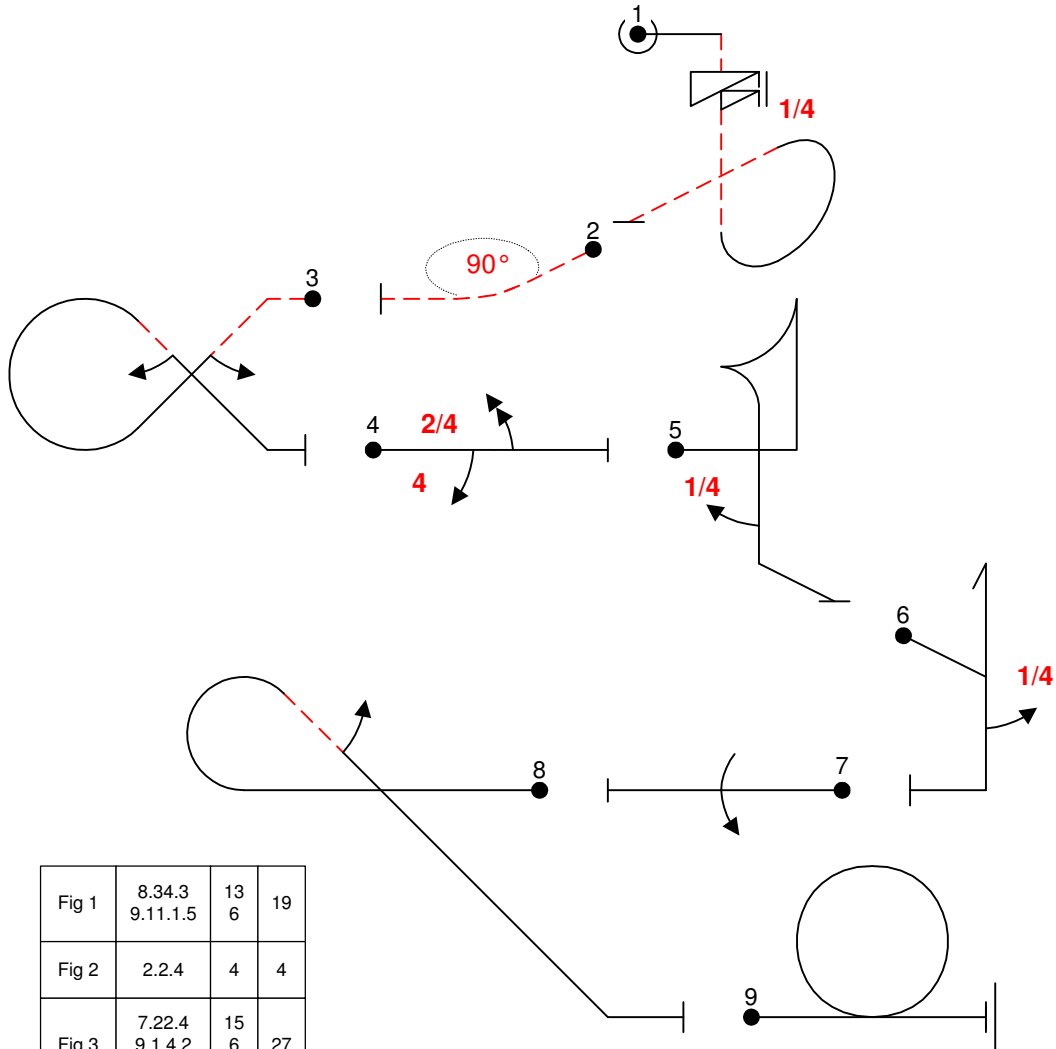


Fig 1	8.34.3 9.11.1.5	13 6	19
Fig 2	2.2.4	4	4
Fig 3	7.22.4 9.1.4.2 9.1.4.2	15 6 6	27
Fig 4	1.1.1 9.4.3.2 9.13.3.2	2 8 8	18
Fig 5	6.1.1 9.1.5.1	15 3	18
Fig 6	5.1.1 9.1.5.1	17 3	20
Fig 7	1.1.1 9.1.3.4	2 12	14
Fig 8	8.42.1 9.1.4.2	10 6	16
Fig 9	7.5.1	10	10

Figuren K = 146



Salzmann Cup 2006

FORM B

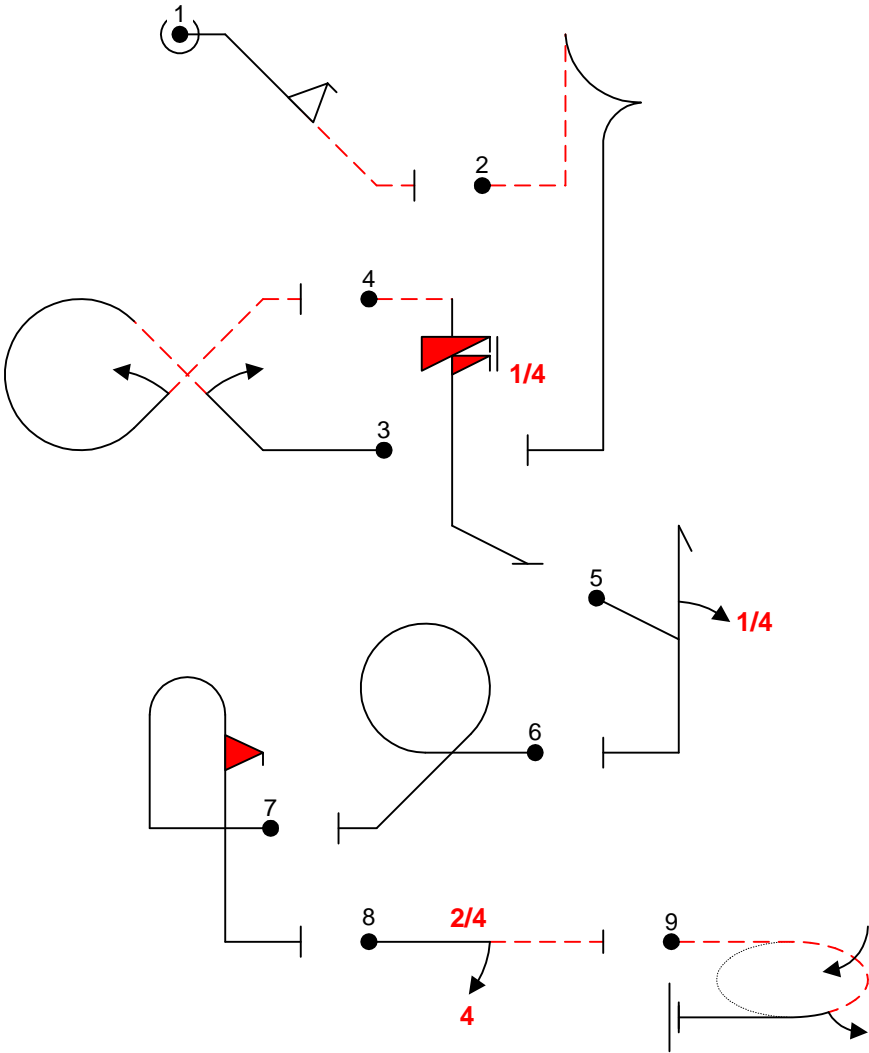
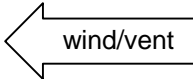


Fig 1	1.3.3 9.9.4.2	8 12	20
Fig 2	6.1.4	17	17
Fig 3	7.22.1 9.1.2.2 9.1.2.2	16 9 9	34
Fig 4	1.7.4 9.12.1.5	9 8	17
Fig 5	5.1.1 9.1.1.1	17 9	26
Fig 6	8.45.1	11	11
Fig 7	8.1.1 9.10.10.2	13 15	28
Fig 8	1.1.3 9.4.3.2	2 8	10
Fig 9	2.19.2	28	28
Total K = 191			



Salzmann Cup 2006 in Donauwörth

FORM B

Kür von:

wind/vent

Pilot:

A/C

Cut Here



Salzmann Cup 2006 in Donauwörth	Flight No.
Kür von:	Form A


AC
pilot

No	Symbol	Catalogue No.	K	Total K	Score	Remarks
1						
2						
3						
4						
5						
6						
7						
8						
9						
10						
11						
12						
13						

Figure K		Total K	
PENALTIES	Number	Total	
			Framing 20
			Harmony 20
Height Infringement	70		Judges Number Name Signature
Interruptions	70		
Outs	2		
No wing-wag	35		
Violation of training	200		



Salzmann Cup 2006 in Donauwörth	FORM C
--	---------------

wind/vent 

Kür von:

Pilot: _____
A/C _____
Cutt Here _____



Anmeldung für den SALZMANN CUP 2006
vom 15.-18. Juni 2006 in Donauwörth

Bitte per Fax an 07451/9002-11 oder Michael.Zistler@moneycheck24.de

Pilot	Verein	PPL-C Nr.	Flugzeug

Vereinsmeisterschaft

- ja
- nein

Flugzeuge

- eigenes
- Förderverein

Camping

- am Platz
- Pension

Sonstiges